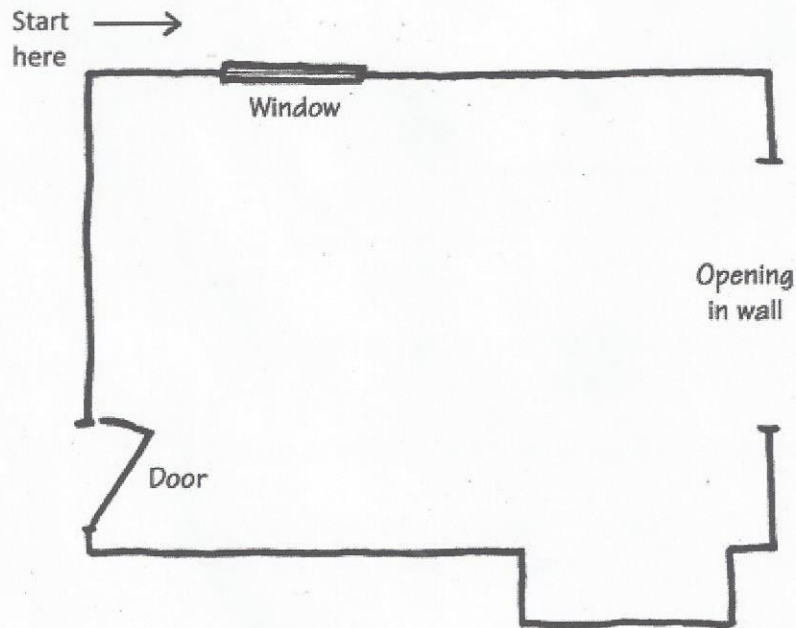


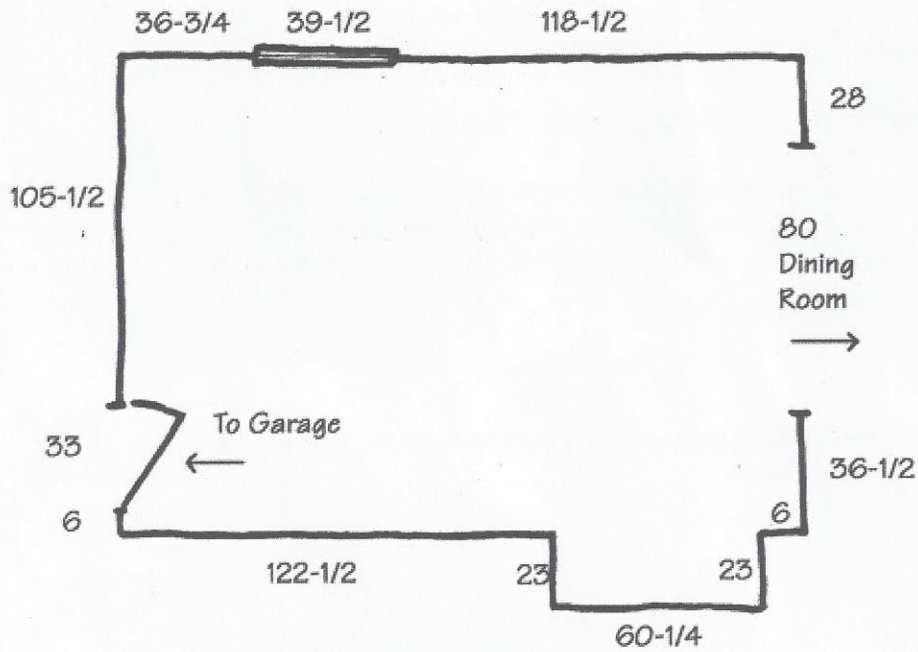
Measuring a Room

Measuring a room is easy - all you need is a tape measure, a pen, and a piece of paper! Just follow these directions:

1. Draw an outline of the room. Show windows and doors.
2. Pick a corner, and measure from the corner to the first stopping point. In our example, that would be the window. Then measure across the window. Then from the window to the next corner. Continue around the room.



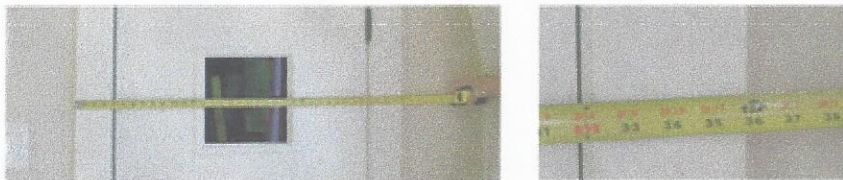
3. Record dimensions in inches.



4. Record ceiling height, window height, and sill height (distance from the floor to bottom of the window).

5. Record the dimensions of any appliances that you plan to reuse.

Remember, when you're measuring windows and doors, always include any window trim or door casing in the dimension. Here's an example:



This door is $35\frac{7}{8}$ " wide.

That's it! You're all done. Come see us, bring your drawing, and we'll take it from there!